

VC-25MX-M 42 I

25 Megapixel Two-Channel CoaXPress Camera



The VC-25MX-42 I, the latest model of the industrial proven VC series, is a new 25 megapixel resolution CMOS camera with a two-channel CoaXPress interface. The VC-25MX-42 I uses the latest CMOS global shutter image sensor (GMAX0505) technology from Gpixel and offers up to 41.7 frames per second at 5120 × 5120 resolution. These combinations of high resolution, high speed and global shutter set a new standard for industrial, scientific and surveillance digital imaging applications. Customers in the industrial market can take advantage of common coax cabling to transmit image data at up to 12.5 Gigabits per second. Featuring high speed and high resolution in a compact form factor, the VC-25MX-42 I is ideal for wide range of demanding applications such as FPD, PCB and semiconductor inspections.

VIEWORKS

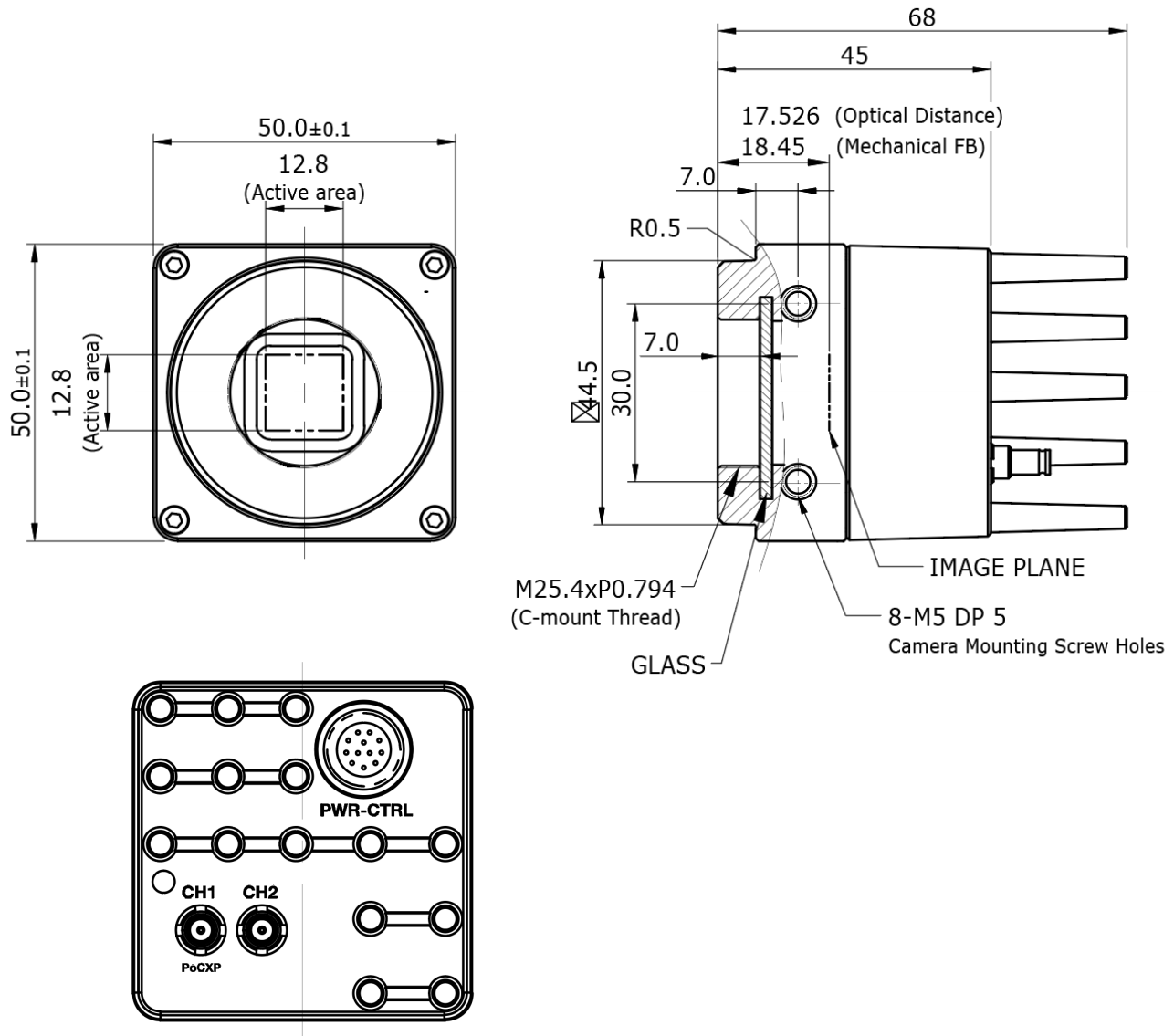
www.vieworks.com

VC-25MX-M 42 I

25 Megapixel Two-Channel CoaXPress Camera

Unit: mm

Mechanical Dimensions



VC-25MX-M 42 I

25 Megapixel Two-Channel CoaXPress Camera

Main Features

- 25 Megapixel Resolution
- CoaXPress Interface up to 41.7 fps at 25 Gbps using 2 CH
- Global Shutter CMOS Technology
- DSNU and PRNU Correction
- Flat Field Correction
- Dynamic Defective Pixel Correction
- GenICam Compatible – XML based Control

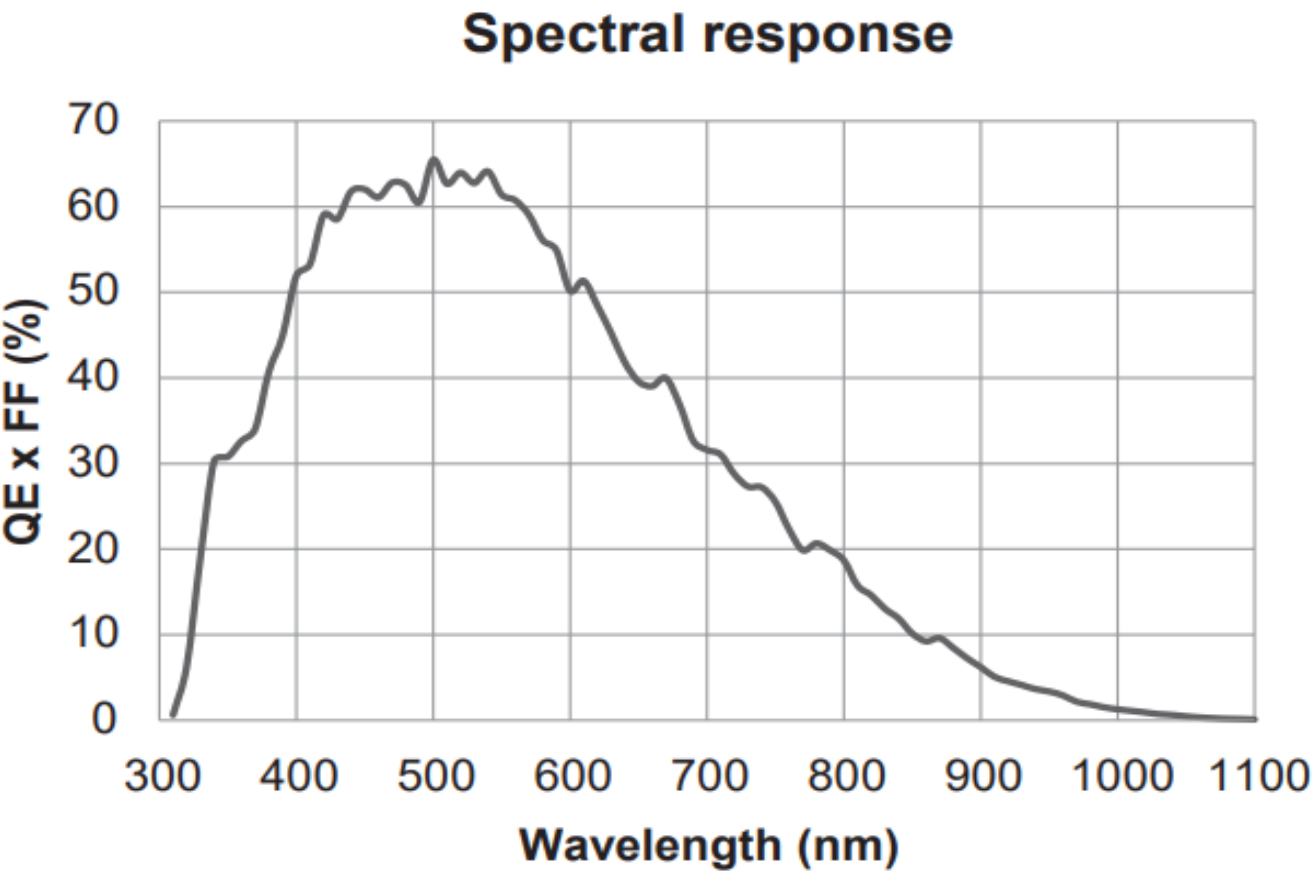
Applications

- Flat Panel Display Inspection
- Electronics Inspection
- Semiconductor Inspection
- Document / Film Scanning

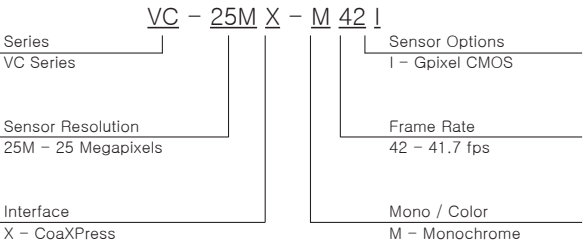
Specifications

Model		VC-25MX-M 42 I
Resolution (H × V)		5120 × 5120
Sensor		Gpixel GMAX0505
Sensor Size (Diagonal)		12.8 mm × 12.8 mm (18.1 mm)
Pixel Size		2.5 μm × 2.5 μm
Interface		CoaXPress
Max. Frame Rate		1 CH: 23.1 fps
		2 CH: 41.7 fps
Exposure Time (1 μs step)		1 μs – 60 s
Partial Scan (Max. Speed)		6144.4 fps at 64 × 2
Pixel Data Format		Mono 8 / Mono 10
Electronic Shutter		Global Shutter
Trigger Synchronization		Free-Run, Hardware Trigger, Software Trigger or CXP
External Trigger		3.3 V ~ 24.0 V, 10 mA, Logical Level Input, Optically Isolated
Software Trigger		Asynchronous, Programmable via Camera API
Dynamic Range		60 dB
Gain Control		1 × ~ 32 ×
Black Level Control		0 ~ 63 LSB at 10 bit
Dimension / Weight		50 mm × 50 mm × 68 mm, 220 g (with C mount)
Temperature		Operating: 0℃ ~ 40℃, Storage: -40℃ ~ 70℃
Lens Mount		C-mount, Custom mount available upon request
Power	External	11 ~ 24 V DC
	Dissipation	Typ. 8.0 W
	PoCXP	24 V DC, CH 1 only
Compliance		CE, FCC, KC
API SDK		Vieworks Imaging Solution 7.X

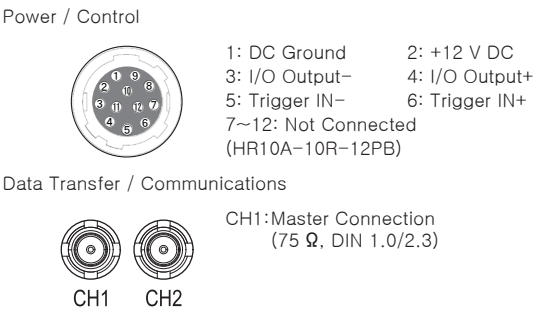
Spectral Response



Ordering Scheme



Connector Specification



Connectors on camera body