

exo342CGE

EXO GigE



Form follows requirements

With uniform size and standard interfaces comes simple interchangeability, allowing the system integrator to easily adapt a solution to varying conditions and requirements - with minimal design effort. SVS-Vistek meets precisely these needs. The EXO series is a perfect match with its uniform form factor and feature set, combined with industry standard interfaces. A solution for virtually every case, allowing smooth and effortless up- or downscaling. Once designed in, the implementations can be varied endlessly.

SVScam EXO series cameras with GigE Vision interface give your applications an extreme scalability. Quick and easy hardware interchangeability results in shorter design cycles and reduced development costs. Further value is added to your application by a virtually limitless feature set. As an example, the 4I/O LED driver with standardized software control.

Technical Highlights

- > IO interface with 2xIN, 4xOUT, Opto and RS232
- > integrated 4-channel power strobe controller for direct LED control
- > SafeTrigger, programmable timers, logic functions (PLC) and sequencer
- > progressive scan/global shutter sensors
- > POE (Power Over Ethernet) single-cable option
- > Burst mode, ROI, binning, lookup tables
- > SDK for Windows (32/64 bit), Linux
- > GenICam standard with GenTL driver
- > up to 120 MB/s data rate, up to 100m cable length
- > broadcast-safe

EXO Series

exo342CGE

| | |
|------------------------------|----------------|
| Resolution [MP] | 31.4 MP |
| Resolution (h x v) | 6464 x 4852 px |
| Frame rate (max.) | 3.8 fps |
| Frame rate burst mode (max.) | 7.6 fps |
| Chroma | color |
| Interface | GigE Vision |

Sensor

| | |
|---------------------|---------------------------|
| Sensor | IMX342LQA |
| Manufacturer | Sony |
| Sensor type | Area CMOS |
| Shutter type | global shutter |
| Sensor size (h x v) | 22.3 x 16.74 mm |
| Optical diagonal | 27.88 mm |
| Sensor format | 27.9mm (APS-C) |
| Pixel size (h x v) | 3.45 x 3.45 μm |

Camera

| | |
|---------------------|--------------------------------|
| Exposure modes | MANUAL;AUTO;EXTERNAL |
| Trigger modes | INTERNAL;SOFTWARE;EXTERNAL |
| Exposure time (min) | 26 μs |
| Exposure time (max) | 1 sec (external ∞) |
| Pixel format / max | bayer8, bayer12packed / 12 bit |
| Gain modes / max | manual, auto / 48 dB |
| S/N ratio (max) | 39.9 dB (dep. on environment) |
| Dynamic range (max) | 70.5 dB (dep. on environment) |
| Internal memory | 256 MB SDRAM, 32 MB Flash |

Feature Set

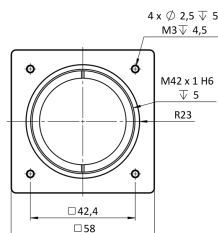
| | |
|------------------------------|-----|
| Manual white balance | yes |
| Automatic white balance | yes |
| AOI | yes |
| LUT | yes |
| Offset | yes |
| Readout control | yes |
| Binning | yes |
| Image flip | yes |
| Shading correction | yes |
| Defect pixel correction | yes |
| Sequencer | yes |
| POE | yes |
| PTP | yes |
| Color Transformation Control | yes |

Housing

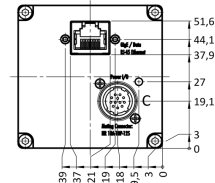
| | |
|---------------------------------|-------------------|
| Lens mount | M42 |
| Dimensions (w x h x d) | 58 x 58 x 46.2 mm |
| Weight | 400 g |
| Operating temperature (housing) | -10 to 65 °C |

Dimensions [mm]

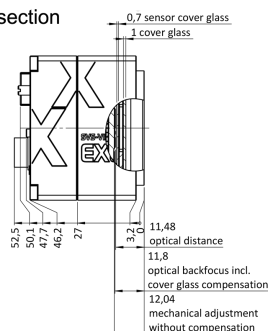
front



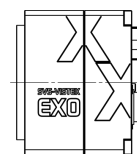
back



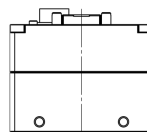
cross section



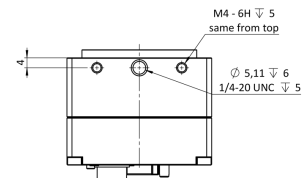
right side



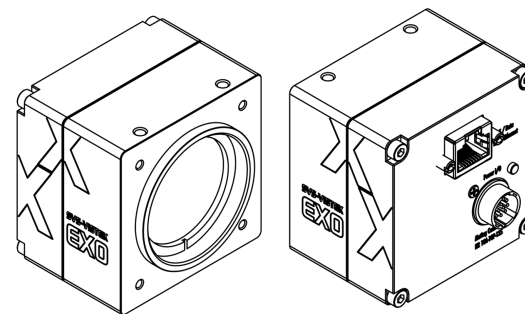
top




bottom



3D

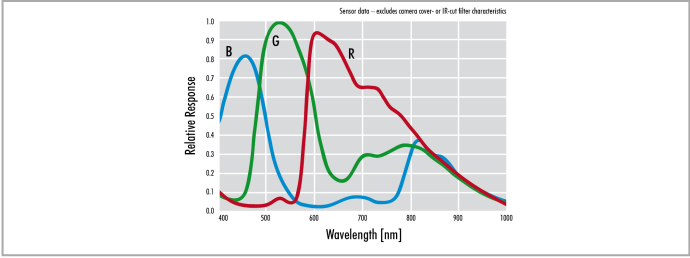


Pinout Mating Connector

| | | | | |
|---|---|-------------------------|----|--------------------|
| Hirose 12 Pin | 1 | VIN - (GND) | 7 | OUT 1 (open drain) |
|  | 2 | VIN + (10 V to 25 V DC) | 8 | OUT 2 (open drain) |
| | 3 | IN 4 (RXD RS232) | 9 | IN 3 + (opto In +) |
| | 4 | OUT 4 (TXD RS232) | 10 | IN 3 - (opto In -) |
| | 5 | IN 1 (0-24V) | 11 | OUT 3 (open drain) |
| | 6 | IN 2 (0-24V) | 12 | OUT 0 (open drain) |

Spectral Response *

| | |
|-------------------|--------------------------------|
| Ambient humidity | 10 to 90 % (non-condensing) |
| Protection class | IP40 |
| I/O-Interfaces | |
| Input up to 24V | 2 x |
| Input OPTO | 1 x |
| Output open drain | 4 x |
| I/O RS-232 | 1 x |
| Power supply | 10 to 25 V (DC) |
| Power consumption | 5.5 W (dep. on operating mode) |



* Sensor data – excludes camera cover- or IR-cut filter characteristics