

# Basler MED ace



CAMERAS FOR MEDICAL & LIFE SCIENCES



- Specifically designed for Medical & Life Sciences
- Basler's powerful MED feature sets
- CMOS technology at its best with Sony Pregius and ON Semiconductor PYTHON sensors
- Up to 164 fps and 20 MP

## OVERVIEW

---

### Bye-Bye, CCD Sensors. Hello Basler MED ace.

Basler MED ace cameras are Basler's first camera series specifically designed for Medical & Life Sciences and are the perfect answer to Sony's discontinuation of CCD sensors. Equipped with CMOS sensor technology at its best, the MED ace delivers even better image quality at much lower costs than CCD cameras.

With Sony's powerful Pregius sensors and exceptional PYTHON sensors by ON Semiconductor, the MED ace stands out with up to 164 fps and 20 MP, pixel sizes up to 5.86µm, low temporal dark noise down to 2e- and sensor sizes up to 1.1 inch.

With 30 years of vision experience, Basler offers top-notch CMOS cameras to support the transition faced by medical device manufacturers.

Basler's unique and industry-leading feature sets for Medical & Life Sciences bring it down to what our customers are looking for: Easy Compliance, Brilliant Image, Perfect Color, Low Light Imaging, High Speed and Industrial Excellence. They combine market-leading hardware, firmware and pylon features. Basler developed unique features specifically designed to address the high imaging demands in Medical & Life Sciences and to reduce customers' development efforts.

Read more on [baslerweb.com/MEDace](https://baslerweb.com/MEDace)

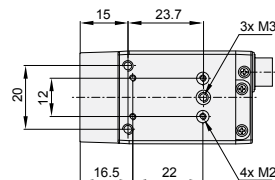
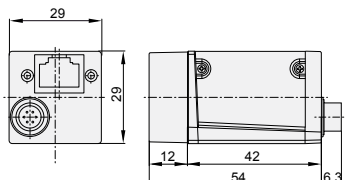
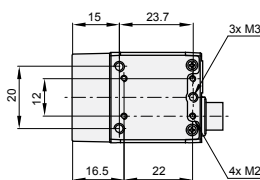
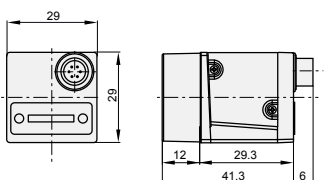


# TECHNICAL DETAILS



NEW	MED ace 2.3 MP 41 color/mono	MED ace 2.3 MP 164 color/mono	MED ace 5.1 MP 35 color/mono	MED ace 5.1 MP 75 color/mono	MED ace 5.3 MP 20 color/mono
Camera					
Camera Category	ace U	ace U	ace U	ace U	ace U
Resolution (H x V pixels)	1920×1200	1920×1200	2448×2048	2448×2048	2592×2048
Sensor	Sony Pregius IMX249	Sony Pregius IMX174	Sony Pregius IMX264	Sony Pregius IMX250	ON Semiconductor PYTHON 5000
Sensor Size [mm]	11.25×7.03	11.25×7.03	8.45×7.07	8.45×7.07	12.44×9.83
Sensor Size (optical)	1/1.2"	1/1.2"	2/3"	2/3"	1"
Sensor Technology	CMOS, global shutter				
Pixel Size [μm²]	5.86×5.86	5.86×5.86	3.45×3.45	3.45×3.45	4.8×4.8
Frame Rate [fps]	41	164	35	75	20
Exposure Control	Via hardware trigger or programmable via the camera API				
Mono/Color	Mono/Color				
Video Output Format	Mono (8, 12, 12 Packed), Bayer RG (8, 12, 12 Packed), YCbCr422_8, RGB8, BGR8				Mono (8, 10, 10 Packed), Bayer BG (8, 10, 10 Packed), YUV 4:2:2 (Packed, YUYV Packed)
Interface	USB 3.0				Gigabit Ethernet
Mechanical/Electrical					
Housing Size	29.3 mm×29 mm×29 mm				42 mm×29 mm×29 mm
Housing Temp.	0 °C – 50 °C				
Lens Mount	C				
Digital I/O	1 opto-isolated input + 1 opto-isolated output + 2 Fast-GPIO (configurable as In/Out)				1 opto-isolated input + 1 opto-isolated output + 1 GPIO
Power Requirements	Via USB 3.0 interface				Power over Ethernet (IEEE 802.3af) or 12-24 VDC (+/- 10%)
Power Consumption	2.9 W	3.7 W	2.7 W	3.4 W	PoE 4.1 W / AUX 3.6 W
Software Environment					
Driver	Basler pylon Camera Software Suite or 3rd party USB3 Vision Software				
Operating System	Windows, Linux, Mac OS X				
Conformity	CE, RoHS, GenICam, USB3 Vision, IP30, UL, FCC Class B, EMV Class B, CISPR				
Specifications are subject to change without prior notice. Latest specifications and availability can be found on our website <a href="http://www.baslerweb.com/MEDace">www.baslerweb.com/MEDace</a> . Please visit <a href="http://www.baslerweb.com/manuals">www.baslerweb.com/manuals</a> for the detailed camera User's Manual and <a href="http://www.baslerweb.com/thirdparty">www.baslerweb.com/thirdparty</a> for information on third party software.					

## Dimensions (in mm): ace U USB 3.0



# TECHNICAL DETAILS

**USB<sup>®</sup>**  
VISION



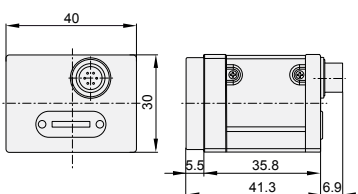
NEW	MED ace 8.9 MP 32 color/mono	MED ace 8.9 MP 42 color/mono	MED ace 12.3 MP 23 color/mono	MED ace 12.3 MP 30 color/mono	MED ace 20.0 MP 17 color/mono
	Camera				PLANNED*
Camera Category	ace L	ace L	ace L	ace L	ace U
Resolution (H×V pixels)	4096×2168	4096×2168	4096×3000	4096×3000	5544×3964
Sensor	Sony Pregius IMX267	Sony Pregius IMX255	Sony Pregius IMX304	Sony Pregius IMX253	Sony IMX183
Sensor Size [mm]	14.13×7.45	14.13×7.45	14.13×10.35	14.13×10.35	13.30×9.51
Sensor Size (optical)	1"	1"	1.1"	1.1"	1"
Sensor Technology	CMOS, global shutter			CMOS, rolling shutter	
Pixel Size [μm <sup>2</sup> ]	3.45×3.45	3.45×3.45	3.45×3.45	3.45×3.45	2.40×2.40
Frame Rate [fps]	32	42	23	30	17
Exposure Control	Via hardware trigger or programmable via the camera API				
Mono/Color	Mono/Color				
Video Output Format	Mono (8, 12, 12 Packed), Bayer RG (8, 12, 12 Packed), YCbCr422_8, RGB8, BGR8				
Interface	USB 3.0				
Mechanical/Electrical					
Housing Size	35.8 mm×40 mm×30 mm				29.3 mm×29 mm×29 mm
Housing Temp.	0°C – 50°C				
Lens Mount	C				
Digital I/O	1 opto-isolated input + 1 opto-isolated output + 2 Fast-GPIO (configurable as In/Out)				
Power Requirements	Via USB 3.0 interface				
Power Consumption	3.0 W	3.6 W	3.0 W	3.6 W	2.9 W
Software Environment					
Driver	Basler pylon Camera Software Suite or 3rd party USB3 Vision Software				
Operating System	Windows, Linux, Mac OS X				
Conformity	CE, RoHS, GenICam, USB3 Vision, IP30, UL, FCC Class B, EMV Class B, CISPR				

Specifications are subject to change without prior notice.

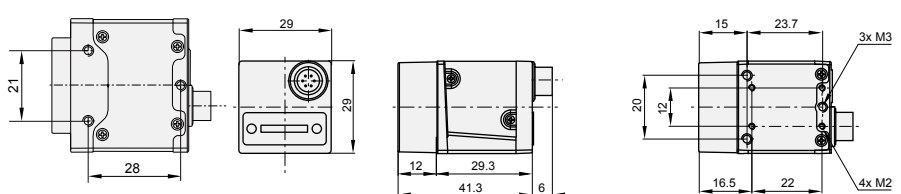
Latest specifications and availability can be found on our website [www.baslerweb.com/MEDace](http://www.baslerweb.com/MEDace). Please visit [www.baslerweb.com/manuals](http://www.baslerweb.com/manuals) for the detailed camera User's Manual and [www.baslerweb.com/thirdparty](http://www.baslerweb.com/thirdparty) for information on third party software.

\*Please note that the camera's specifications are preliminary.

## Dimensions (in mm): ace L USB 3.0



## Dimensions (in mm): ace U USB 3.0



## MED FEATURE SETS

---

The Basler MED feature sets combine our cameras' most impressive attributes, and stand out with their hardware, firmware and pylon features. Find features specifically designed for Medical & Life Sciences within the following sets. Find more information on [baslerweb.com/MED-Feature-Sets](https://baslerweb.com/MED-Feature-Sets).



### BRILLIANT IMAGE

Get a supreme image out-of-the-box with the Brilliant Image feature set. Experience Basler MED cameras with the market-leading PGI algorithm for color and monochrome cameras, advanced auto white balancing, as well as smart auto contrast and auto exposure algorithms.



### PERFECT COLOR

This feature set incorporates several unique tools to change the color appearance of your image: adjust settings for hue, saturation and brightness for full control of color space. Basler's Color Adjustment (6-axis Hue/Saturation) enables for single-color changes and the Color Calibrator Beyond lets you find the perfect color parameters for highest color fidelity.



### LOW LIGHT IMAGING

State-of-the-art Sony Pregius CMOS sensor technology together with Basler's unique long exposure mode and built-in histogram functions allow for excellent low light images. The well-developed CMOS technology combined with the Low Light Imaging feature set is highly beneficial for applications with fluorescence imaging.



### HIGH SPEED

Basler offers fast and yet highly reliable cameras for high-speed applications in laboratory automation. Experience Basler MED ace cameras with frame rates between 60 and 164 frames per second with global shutter and CMOS sensor technology as well as industry-proven USB3 Vision interface technology.



### INDUSTRIAL EXCELLENCE

Basler cameras are 100% quality tested and are the market's most robust and reliable products. Together with the pylon Camera SDK, our extended camera control features and a customer-focused support based on 30 years of vision experience, camera integration has never been more efficient.

## OTHER INFORMATION

### About Basler

Basler is a leading manufacturer of high-quality digital cameras and accessories for industry, medicine, traffic and a variety of other markets. The company's product portfolio encompasses area scan and line scan cameras in compact housing dimensions, camera modules in board level variants for embedded solutions, and 3D cameras. The catalog is rounded off by our user-friendly pylon SDK and a broad spectrum of accessories, including a number developed specially for Basler and optimally harmonized for our cameras.

Basler has 30 years of experience in computer vision. The company is home to approximately 500 employees at its headquarters in Ahrensburg, Germany, and its subsidiaries and sales offices in Europe, Asia, and North America.



Find our white papers, success stories and more useful information on:  
[baslerweb.com/medical](http://baslerweb.com/medical).

### 3-Year Warranty

Basler offers a 3-year warranty for their cameras and the Basler Lenses 1/2.5". We make this unprecedented promise because we have unparalleled confidence in our products. We continually reinvest in research, development and superior manufacturing capabilities so that our customers can fully rely on the products we manufacture.

### How Does Basler Ensure Superior Quality and Reliable High Performance

Our approach to quality assurance is rigorous: we continually audit all facets of our business to ensure powerful performance, increase efficiency and reduce costs for our customers. We are compliant with all major quality standards including ISO 9001, CE, RoHS, and more. To ensure consistently high product quality, we employ several quality inspection procedures during manufacturing. Every Basler camera is subjected to exhaustive optical and mechanical tests before leaving the factory. Regardless of what technology or camera model you choose you can be assured of consistent performance.



**Basler AG**  
**Germany, Headquarters**  
Tel. +49 4102 463 500  
[sales.europe@baslerweb.com](mailto:sales.europe@baslerweb.com)

**Basler, Inc.**  
**USA**  
Tel. +1 610 280 0171  
[sales.usa@baslerweb.com](mailto:sales.usa@baslerweb.com)

**Basler Asia Pte Ltd.**  
**Singapore**  
Tel. +65 6367 1355  
[sales.asia@baslerweb.com](mailto:sales.asia@baslerweb.com)

©Basler AG, No. 02, 03/2018  
ID 2200000218

Please visit our website to find further Basler offices and representatives close to you:  
[www.baslerweb.com/sales](http://www.baslerweb.com/sales)

**BASLER**  
the power of sight