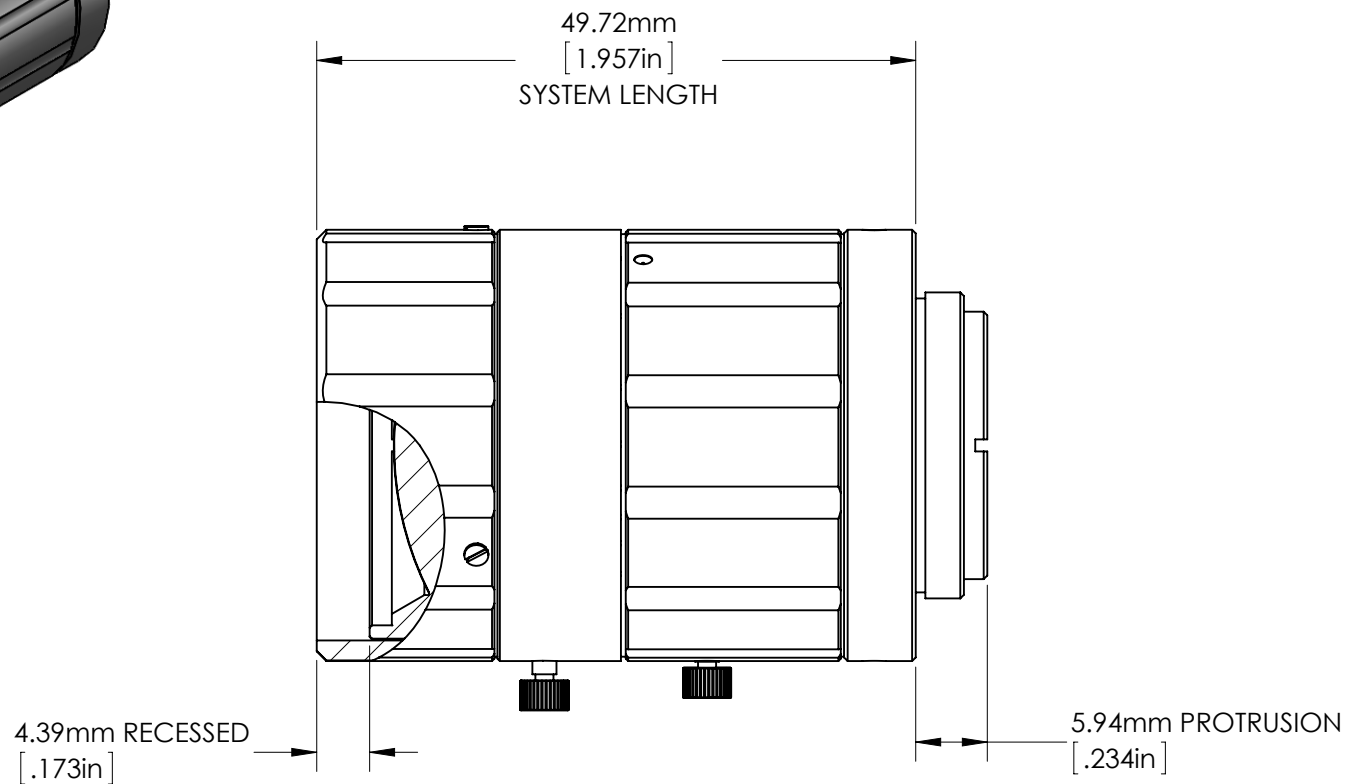
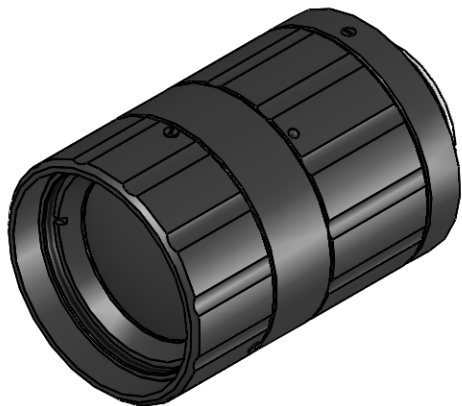


*ALSO INCLUDES RECESSED SET SCREW OPTION

SPECIFICATIONS SUBJECT TO CHANGE WITHOUT NOTICE
DIMENSIONS ARE FOR REFERENCE ONLY
DIMENSIONS ARE IN mm [INCHES]

FOCAL LENGTH	50.00mm
FOV RANGE ON 2/3" SENSOR	42.5mm - 8.5°
FOV RANGE ON 1/2" SENSOR	31.0mm - 6.2°
FOV RANGE ON 1/3" SENSOR	23.0mm - 4.6°
WORKING DISTANCE	250mm - ∞
APERTURE (f/#)	f2 - f22

 Edmund Optics®				
TITLE	50mm Compact Fixed Focal Length Lens			
DWG NO	59873	MATERIAL	BLACK ANODIZED ALUMINUM	SHEET 1 OF 2



VIEW OF LENS FOCUSED TO INFINITY WORKING DISTANCE

SPECIFICATIONS SUBJECT TO CHANGE WITHOUT NOTICE
DIMENSIONS ARE FOR REFERENCE ONLY
DIMENSIONS ARE IN mm [INCHES]



Edmund Optics®

TITLE		50mm Compact Fixed Focal Length Lens		
DWG NO	59873	MATERIAL	BLACK ANODIZED ALUMINUM	SHEET 2 OF 2

Enable 3D View