



Goldeye CL  
Quickstart Guide

V1.1.0

2018-Jun-20  
Part ID: 10683009



# Validity

This QuickStart Guide is valid for the following Goldeye CL models:

<b>Model</b>	<b>Order codes</b>	<b>Sensor</b>
Goldeye CL-008: All standard and customized models	4168xxx 6168xxx	InGaAs FPA 320 x 256
Goldeye CL-032: All standard and customized models	4168xxx 6168xxx	InGaAs FPA 636 x 508
Goldeye CL-033: All standard and customized models	4168xxx 6168xxx	InGaAs FPA 640 x 512

# Shipping contents

- Goldeye CL camera
- *Goldeye CL Cameras Quickstart Guide*

## What else do you need?

Document/Information	Document
Goldeye G/CL Technical Manual	<a href="https://www.alliedvision.com/en/support/technical-documentation/goldeye-gcl-documentation.html">https://www.alliedvision.com/en/support/technical-documentation/goldeye-gcl-documentation.html</a>
Goldeye G/CL Features reference	<a href="https://www.alliedvision.com/en/support/technical-documentation/goldeye-gcl-documentation.html">https://www.alliedvision.com/en/support/technical-documentation/goldeye-gcl-documentation.html</a>
Frame grabber installation guide	The frame grabber software installation guide is provided by the frame grabber manufacturer.
Frame grabber connection cable	Suitable frame grabber connection cables are listed in your frame grabber installation guide.
Trigger- and power cables	See the Accessories table on page 4.
Software	Reference
Vimba	<a href="https://www.alliedvision.com/en/products/software.html">https://www.alliedvision.com/en/products/software.html</a>

## Accessories

Note for the accessories listed below it is assumed that a suitable power supply is available.

### I/O cable with Hirose 12-pin connector (not for models with Cool housing).

Length	2 m	3 m	5 m	10 m
Order code	2814	2815	2817	2818

### Power cable with Hirose 4-pin connector (for Cool models only).

Length	2 m	3 m	5 m	10 m
Order code	1068904	1068905	1068906	1068907

### Camera Link cables MDR to SDR and SDR to SDR.

	MDR to SDR			SDR to SDR		
Length	3.0 m	5.0 m	10.0 m	3.0 m	5.0 m	10.0 m
Order code	9001030	9001032	9001036	9001040	9001042	9001046

# Contacting Allied Vision

## Website

To directly contact Allied Vision with any enquiry, go to:  
<https://www.alliedvision.com/en/meta-header/contact>

To find an Allied Vision office or distribution partner, go to:  
<https://www.alliedvision.com/en/about-us/where-we-are>

## Phone and E-mail

For all camera-related queries contact us at [support@alliedvision.com](mailto:support@alliedvision.com)

For all general inquiries, contact us at [info@alliedvision.com](mailto:info@alliedvision.com)

**North and South America:** Toll-free: // +1-877-USA-1394

**Europe, Middle East, and Africa:** // +49 36428 677-0 (Reception)

**Asia-Pacific:** Allied Vision: // +65 6634 9027

Sales Office China: // +86 21 64861133

# Compliance, safety, and intended use

## For customers in Europe



Allied Vision has demonstrated the fulfillment of the requirements relating to the Goldeye G/CL camera family.

- Directive 2014/30/EU (Electromagnetic compatibility)
- Directive 2011/65/EU, incl. amendment 2015/863/EU (RoHS)



Directive 2012/19/EU  
(Waste of Electric and Electronical Equipment, WEEE)

## For customers in the USA



### **Class B digital device**

Note: This equipment has been tested and found to comply with the limits for a Class B digital device, pursuant to part 15 of the FCC Rules. These limits are designed to provide reasonable protection

against harmful interference in a residential installation. This equipment generates, uses and can radiate radio frequency energy and, if not installed and used in accordance with the instructions, may cause harmful interference to radio communications. However, there is no guarantee that interference will not occur in a particular installation. If this equipment does cause harmful interference to radio or television reception, which can be determined by turning the equipment off and on, the user is encouraged to try to correct the interference by one or more of the following measures:

- Reorient or relocate the receiving antenna.
- Increase the separation between the equipment and receiver.
- Connect the equipment into an outlet on a circuit different from that to which the receiver is connected.
- Consult the dealer or an experienced radio/TV technician for help.

We caution the user that changes or modifications not expressly approved by the party responsible for compliance could void the user's authority to operate the equipment.

## Avoid electromagnetic interferences

For all power and interface connections, use shielded cables only. Please use cables recommended by Allied Vision.

## Camera applications and intended use

### General use

- The user is responsible for operating the camera within the specifications defined in the user guide, and within appropriate environmental conditions and technical prerequisites, to ensure trouble-free camera operation.
- The camera is compliant with current data communication standards; however, those standards do not allow for self-monitoring. Thus, the camera cannot be used as a standalone device for security-related monitoring operations.
- The camera is a hardware product. Only when used with appropriate accompanying software, the camera will produce the desired results. The realization of intelligent solutions requires additional software that is suitable to run with the camera.



- The camera is a component, it is neither a complete product, nor is it a readymade technical solution.
- The camera-supporting software can be obtained and installed separately from the camera. Usage of the software is solely the responsibility of the user.
- The camera must not be opened. For all repair tasks, contact Allied Vision or one of Allied Vision's authorized representatives.
- Observe the intended use. The camera must only be used for purposes that are in conformity with the stated intended use.
- Additionally, refer to the warranty information on the Allied Vision website.

### **Use in medical devices**

The camera provides basic adequacy to be used in medical devices as well, however, is not specially designated for operation in medical devices. When used as part of a medical device, a review of the specific application is necessary. Users who integrate the camera into an application must comply with the rules and regulations concerning medical devices.

# Overview of installation

Complete the steps listed below to successfully install your Goldeye CL camera.

1. Install a frame grabber card
2. Install the frame grabber software
3. Install Vimba SDK plus corresponding viewers
4. Connect to the frame grabber card and ensure that the camera is powered
5. Use the Vimba viewer to configure and control the camera. Use the frame grabber software to acquire images.

## Installing a frame grabber

For the installation of a frame grabber, the computer must meet the minimum system requirements of the frame grabber.

Find the requirements in the technical manual of the frame grabber.

Refer also to the frame grabber installation manual provided by the manufacturer regarding installation details.

## Installing frame grabber software

Install the frame grabber software.

Read the frame grabber software installation guide provided by the frame grabber manufacturer

## Installing Vimba SDK on Windows

You can install the Vimba SDK on Windows 7, Windows 8.1, and Windows 10.

To install the Vimba SDK on Windows, follow the steps below.

- To start the installation, run the downloaded setup file.
- Select an installation level suitable for you.
- Click Start. The installer will guide you through the installation process.

## Powering up the camera

To power up the camera, plug the 12-pin Hirose connector into the camera and wait for the boot phase to complete. For Cool models, use the 4-pin Hirose connector. A 1 Hz steady red-green flashing of the Camera Link status LED indicates the boot phase.

A camera power adapter for the Goldeye CL series is available from Allied Vision.

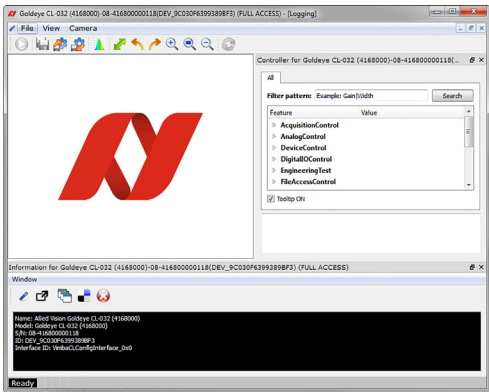
## Connecting to the host computer

To connect the camera to the host computer, use a Camera Link cable with an SDR-26 connector for the camera side.

To retrieve information about the required connector type for the frame grabber (either MDR-26 or SDR-26), refer to the frame grabber manual.

## Launch the applications

1. Power up the camera and wait until the Camera Link Status LED stops blinking. This indicates booting has been finished.
2. Launch the Vimba Viewer application and wait for the camera to appear in the Detected Cameras list. This may take a few seconds, depending on the number of cameras connected to the PC and the number of installed frame grabbers.
3. Select the desired camera from Detected Cameras list.
4. A new camera window appears.



5. Launch the viewing application provided by frame grabber manufacturer.

## Grabbing images

To grab images, use the viewer application provided by the frame grabber manufacturer. It is necessary to configure the viewer application regarding the incoming image format, width, height, and tap geometry of the camera.

To start image acquisition, refer to the frame grabber manual.

## Advanced camera control

To learn about using custom applications and the frame grabber transport layer, refer to the Goldeye G/CL Technical manual.

## Copyright and trademarks

All texts, pictures and graphics are protected by copyright and other laws protecting intellectual property. All content is subject to change without notice.

All trademarks, logos, and brands cited in this document are property and/or copyright material of their respective owners. Use of these trademarks, logos, and brands does not imply endorsement.

Copyright © 2018 Allied Vision GmbH. All rights reserved.