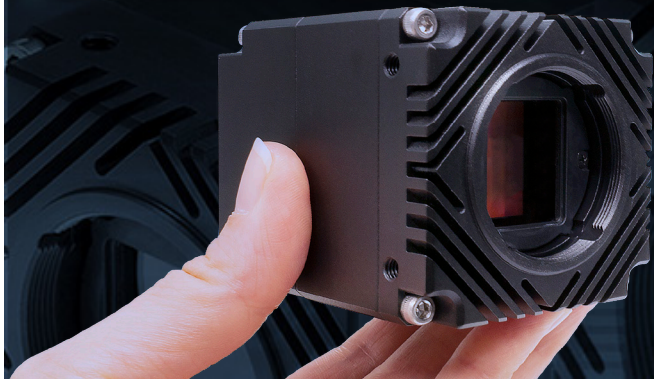


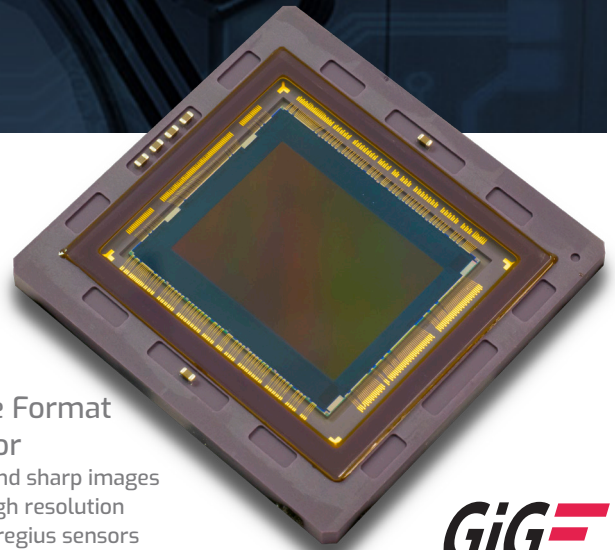
Atlas™

5GigE

5.0 MP to 31.4 MP Sony Pregius Sensors over 5GBASE-T PoE



- Active Sensor Alignment
- Power over Ethernet (PoE)
- Use existing Cat5e or Cat6 cables
- Up to 600MB/s data transfer rates



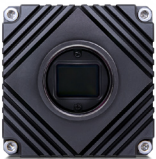
Large Format Sensor

Clear and sharp images with high resolution Sony Pregius sensors

GigE
VISION



TFL-Mount



C-Mount



M12 & M8 Connectors

Atlas Models

| Model | MP | Resolution | FPS | Sensor | Format | Pixel Size | Shutter | Lens Mount | Chroma | GigE Interface |
|----------|---------|----------------|-----------|------------------|--------------|------------|---------|------------------|--------|----------------|
| ATL314S | 31.4 MP | 6464 x 4852 px | 17.9 fps | Sony IMX342 CMOS | APS-C 27.9mm | 3.45 μm | Global | TFL (M35 x 0.75) | M/C | 5GBASE-T, M12 |
| ATL196S | 19.6 MP | 4416 x 4428 px | 28 fps | Sony IMX367 CMOS | 4/3" 21.7mm | 3.45 μm | Global | TFL (M35 x 0.75) | M/C | 5GBASE-T, M12 |
| ATL168S | 16.8 MP | 5456 x 3076 px | 33 fps | Sony IMX387 CMOS | 4/3" 21.6mm | 3.45 μm | Global | TFL (M35 x 0.75) | M/C | 5GBASE-T, M12 |
| ATL120S | 12.3 MP | 4096 x 3000 px | 42 fps | Sony IMX253 CMOS | 1.1" | 3.45 μm | Global | C | M/C | 5GBASE-T, M12 |
| ATL089S | 8.9 MP | 4096 x 2160 px | 58 fps | Sony IMX255 CMOS | 1" | 3.45 μm | Global | C | M/C | 5GBASE-T, M12 |
| ATL071S* | 7.1 MP | 3208 x 2200 px | 74.6 fps* | Sony IMX420 CMOS | 1.1" | 4.5 μm | Global | C | M/C | 5GBASE-T, M12 |
| ATL050S | 5.0 MP | 2448 x 2048 px | 98 fps | Sony IMX250 CMOS | 2/3" | 3.45 μm | Global | C | M/C | 5GBASE-T, M12 |
| ATL028S* | 2.8 MP | 1936 x 1464 px | 173 fps* | Sony IMX421 CMOS | 2/3" | 3.45 μm | Global | C | M/C | 5GBASE-T, M12 |

*coming Q3 2019

Specifications

| Interface, Power, and Size Information | |
|--|---|
| Digital Interface | 5GBASE-T, 2.5GBASE-T, 1000BASE-T, 100BASE-TX M12, PoE |
| GPIO Interface | 8 pin M8 connector |
| Opto-isolated I/O ports | 1 input, 1 output |
| Non-isolated I/O ports | 2 bi-directional |
| Dimensions | 55 x 55 x 70 mm |
| Lens Mount | TFL-mount, C-Mount |
| Weight | 240 g |
| Power Requirement | PoE (IEEE 802.3af), or 12-24 VDC external |
| Power Consumption | 8.5W via PoE, 8W when powered externally |

| Standard and Certifications | |
|-----------------------------|--|
| Standard | GigE Vision v2.0 |
| Compliance | CE, FCC, RoHS, REACH, WEEE |
| IP Rating | IP67 (with IP67 lens tube and cables) |
| Storage Temperature | -30 to 60°C |
| Operating Temperature | -20 to 55°C |
| Humidity | Operating: 20% ~ 80%, relative, non-condensing |
| Storage Humidity | 20% ~ 95%, relative, non-condensing |
| Warranty | 3 years |

| Imaging Properties | |
|--------------------|--|
| Image Buffer | 380 MB |
| Image Processing | Gain, gamma, black level, white balance, LUT, CCM, pixel correction, hue, saturation, color space conversion |
| Pixel Formats | Mono8/10/12/16, Bayer8/10/12/16, RGB8, YUV422, YUV411 |
| Image Modes | Horizontal and vertical binning, decimation, ROI, horizontal and vertical flip |
| ADC | 8, 10, 12 bit |
| Gain Range | 0 dB to 48 dB analog and digital |
| Exposure Time | 30 μs to 10 s |

| Camera Features | |
|------------------|--|
| User Sets | 1 default and 2 custom |
| File system size | 16 MB |
| Chunk Data | Timestamp, frame counter, offset X/Y, width/height, exposure time, gain, black level, line status, sequencer set |
| Event Data | Exposure start/end |
| Counter & Timer | 2 counters and 2 timers |
| Sequencer | Exposure time, gain |
| Synchronization | Software trigger, hardware trigger, PTP (IEEE 1588) |

TFL-Mount / C-Mount Models Models

