



Goldeye G  
Quickstart Guide

V1.1.0

2018-Jun-20  
Part ID: 10683010



# Validity

This QuickStart Guide is valid for the following Goldeye G models:

<b>Model</b>	<b>Order codes</b>	<b>Sensor</b>
Goldeye G-008: All standard and customized models	4068xxx 6068xxx	InGaAs FPA 320 x 256
Goldeye G-032: All standard and customized models	4068xxx 6068xxx	InGaAs FPA 636 x 508
Goldeye G-033: All standard and customized models	4068xxx 6068xxx	InGaAs FPA 640 x 512

# Shipping contents

- Goldeye G camera
- *Goldeye G Cameras Quickstart Guide*

## What else do you need?

Document/Information	Document
Goldeye G/CL Technical Manual	<a href="https://www.alliedvision.com/en/support/technical-documentation/goldeye-gcl-documentation.html">https://www.alliedvision.com/en/support/technical-documentation/goldeye-gcl-documentation.html</a>
Goldeye G/CL Features reference	<a href="https://www.alliedvision.com/en/support/technical-documentation/goldeye-gcl-documentation.html">https://www.alliedvision.com/en/support/technical-documentation/goldeye-gcl-documentation.html</a>
Trigger- and power cables	See the Accessories table on page 4.
Software	Reference
Vimba	<a href="https://www.alliedvision.com/en/products/software.html">https://www.alliedvision.com/en/products/software.html</a>

## Accessories

Note for the accessories listed below it is assumed that a suitable power supply is available.

### **I/O cable with Hirose 12-pin connector (not for models with Cool housing).**

Length	2 m	3 m	5 m	10 m
Order code	2814	2815	2817	2818

### **Power cable with Hirose 4-pin connector (for Cool models only).**

Length	2 m	3 m	5 m	10 m
Order code	1068904	1068905	1068906	1068907

# Contacting Allied Vision

## Website

To directly contact Allied Vision with any enquiry, go to:  
<https://www.alliedvision.com/en/meta-header/contact>

To find an Allied Vision office or distribution partner, go to:  
<https://www.alliedvision.com/en/about-us/where-we-are>

## Phone and E-mail

For all camera-related queries contact us at [support@alliedvision.com](mailto:support@alliedvision.com)

For all general inquiries, contact us at [info@alliedvision.com](mailto:info@alliedvision.com)

**North and South America:** Toll-free: // +1-877-USA-1394

**Europe, Middle East, and Africa:** // +49 36428 677-0 (Reception)

**Asia-Pacific:** Allied Vision: // +65 6634 9027

Sales Office China: // +86 21 64861133

# Compliance, safety, and intended use

## For customers in Europe



Allied Vision has demonstrated the fulfillment of the requirements relating to the Goldeye G/CL camera family.

- Directive 2014/30/EU (Electromagnetic compatibility)
- Directive 2011/65/EU, incl. amendment 2015/863/EU (RoHS)



Directive 2012/19/EU  
(Waste of Electric and Electronical Equipment, WEEE)

## For customers in the USA



### **Class B digital device**

Note: This equipment has been tested and found to comply with the limits for a Class B digital device, pursuant to part 15 of the FCC Rules. These limits are designed to provide reasonable protection

against harmful interference in a residential installation. This equipment generates, uses and can radiate radio frequency energy and, if not installed and used in accordance with the instructions, may cause harmful interference to radio communications. However, there is no guarantee that interference will not occur in a particular installation. If this equipment does cause harmful interference to radio or television reception, which can be determined by turning the equipment off and on, the user is encouraged to try to correct the interference by one or more of the following measures:

- Reorient or relocate the receiving antenna.
- Increase the separation between the equipment and receiver.
- Connect the equipment into an outlet on a circuit different from that to which the receiver is connected.
- Consult the dealer or an experienced radio/TV technician for help.

We caution the user that changes, or modifications not expressly approved by the party responsible for compliance could void the user's authority to operate the equipment.

## Avoid electromagnetic interferences

For all power and interface connections, use shielded cables only. Please use cables recommended by Allied Vision.

## Camera applications and intended use

### General use

- The user is responsible for operating the camera within the specifications defined in the user guide, and within appropriate environmental conditions and technical prerequisites, to ensure trouble-free camera operation.
- The camera is compliant with current data communication standards; however, those standards do not allow for self-monitoring. Thus, the camera cannot be used as a standalone device for security-related monitoring operations.
- The camera is a hardware product. Only when used with appropriate accompanying software, the camera will produce the desired results. The realization of intelligent solutions requires additional software that is suitable to run with the camera.



- The camera is a component, it is neither a complete product, nor is it a readymade technical solution.
- The camera-supporting software can be obtained and installed separately from the camera. Usage of the software is solely the responsibility of the user.
- The camera must not be opened. For all repair tasks, contact Allied Vision or one of Allied Vision's authorized representatives.
- Observe the intended use. The camera must only be used for purposes that are in conformity with the stated intended use.
- Additionally, refer to the warranty information on the Allied Vision website.

### **Use in medical devices**

The camera provides basic adequacy to be used in medical devices as well, however, is not specially designated for operation in medical devices. When used as part of a medical device, a review of the specific application is necessary. Users who integrate the camera into an application must comply with the rules and regulations concerning medical devices.

# Overview of installation

Complete the steps listed below to successfully install your Goldeye G camera.

1. Install Gigabit Ethernet network card and configure network card.
2. Install Vimba SDK plus corresponding viewers.
3. Connect camera to PC or laptop and ensure that the camera is powered.
4. Acquiring your first image with Vimba viewer.

## Installing a Gigabit Ethernet network card

If your host computer has an available Ethernet interface, this can be used with Allied Vision GigE cameras. We recommend that your camera system uses a dedicated Ethernet interface not shared with Internet or local area networks. If more interfaces are needed, or your existing Ethernet adapter is unable to operate at Gigabit Ethernet speeds, installing additional hardware may be required.

- For desktop systems, use a PCI Express bus Ethernet adapter.
- For laptops, use an expansion slot via an Express Card.

## Configuring Ethernet adapter

Install the network card driver from your network card manufacturer.

Read the frame grabber software installation guide provided by the frame grabber manufacturer.

## Modifying Ethernet adapter IP address

After Ethernet adapter hardware installation, connect the Ethernet adapter directly to the camera. The default configuration assigns an IP address automatically, using the Link-Local Address range of 169.254.xxx.xxx.

If a DHCP server is present, this will define the address.

To connect to the camera, configure the following settings.

- IP Address: 169.254.100.1
- Subnet mask: 255.255.0.0
- Default gateway: blank

## Optimizing Ethernet adapter

Edit the Ethernet adapter driver properties according to the values listed below.

Properties	Values
Packet size	8228 bytes or larger
Interrupt Moderation	Enable
Interrupt Moderation Rate	Extreme
Transmit buffers	256 bytes
Receive buffers	Max setting available

## Installing Vimba SDK on Windows

You can install the Vimba SDK on Windows 7, Windows 8.1, and Windows 10.

To install the Vimba SDK on Windows, follow the steps below.

- To start the installation, run the downloaded setup file.
- Select an installation level suitable for you.
- Click `Start`. The installer will guide you through the installation process.

## Powering up the camera

To power up the camera, plug the 12-pin Hirose connector into the camera and wait for the boot phase to complete. For Cool models, use the 4-pin Hirose connector. A steady flashing of the Ethernet status LEDs indicates the boot phase.

A camera power adapter for the Goldeye G series is available from Allied Vision.

## Connecting to the host computer

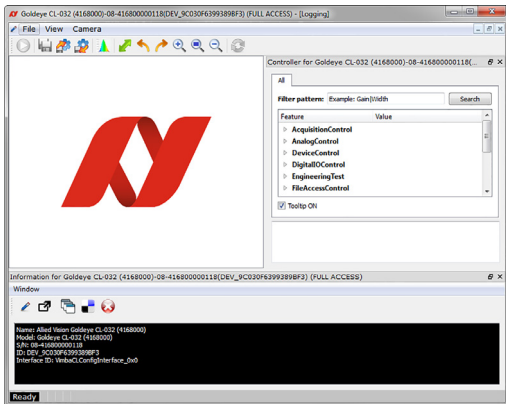
To connect the camera to the host computer, use a Category 5e cable or higher.

## Launch the applications

1. Power up the camera and wait until the Ethernet Status LEDs stop blinking. This indicates booting has been finished.
2. Launch the Vimba Viewer application and wait for the camera to appear in the Detected Cameras list. This may take a few seconds, depending on the number of cameras connected to the PC and the number of installed frame grabbers.
3. Select the desired camera from Detected Cameras list.
4. A new camera window appears, as shown on page 15.

## Grabbing images

To start continuous image acquisition, using default camera settings, click on the freerun button in the viewer toolbar. The freerun button is used to start and stop the live view.



## Copyright and trademarks

All texts, pictures and graphics are protected by copyright and other laws protecting intellectual property. All content is subject to change without notice.

All trademarks, logos, and brands cited in this document are property and/or copyright material of their respective owners. Use of these trademarks, logos, and brands does not imply endorsement.

Copyright © 2018 Allied Vision GmbH. All rights reserved.