

PixelINK[®]

AUTOFOCUS LIQUID LENS CAMERAS



PixelINK has introduced a family of USB3 autofocus liquid lens cameras, ideal for high-speed, autofocus imaging applications. Some important features of the camera includes:



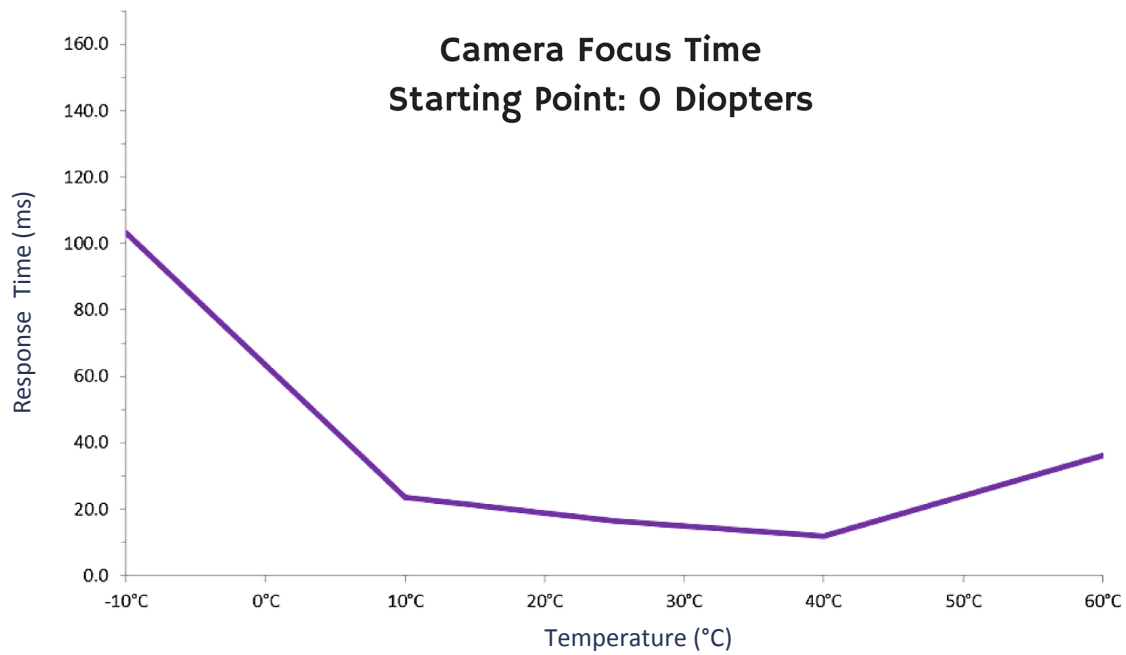
- **One-push autofocus, move focus from one point to another at high speed**
- **Seamless integration of a compact, low-power, durable liquid lens**
- **Get a sharp image from a few centimeters to infinity in less than 20ms**
- **Get started quickly by integrating your autofocus application with the PixelINK SDK**

Liquid lens technology delivers fast, continuous and precise focus control that is well suited to many applications including:

- Bar-code Reading
- Biometrics – Facial and Retinal
- Inspection
- Biotechnology
- Medical Applications

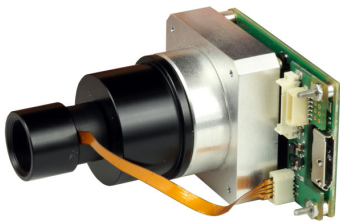
Long Lifespan, Fast Focus Camera

While the typical lifespan of a mechanical lens system is a few hundred thousand cycles, liquid lenses have been tested over 100 million cycles without performance degradation. Liquid lenses can also reconfigure themselves in tens of milliseconds, making them ideal for high vibration environments and applications that require fast focus changes. A combination of liquid lens integrated with our high speed USB3 cameras, brings cutting edge solutions to industrial and medical applications.



You can see that at 10C, it takes about 20ms or less to snap into any focal point. For reference, a high end DSLR camera with AF would take 300ms+ to do the same.

Key advantages of an autofocus lens camera:



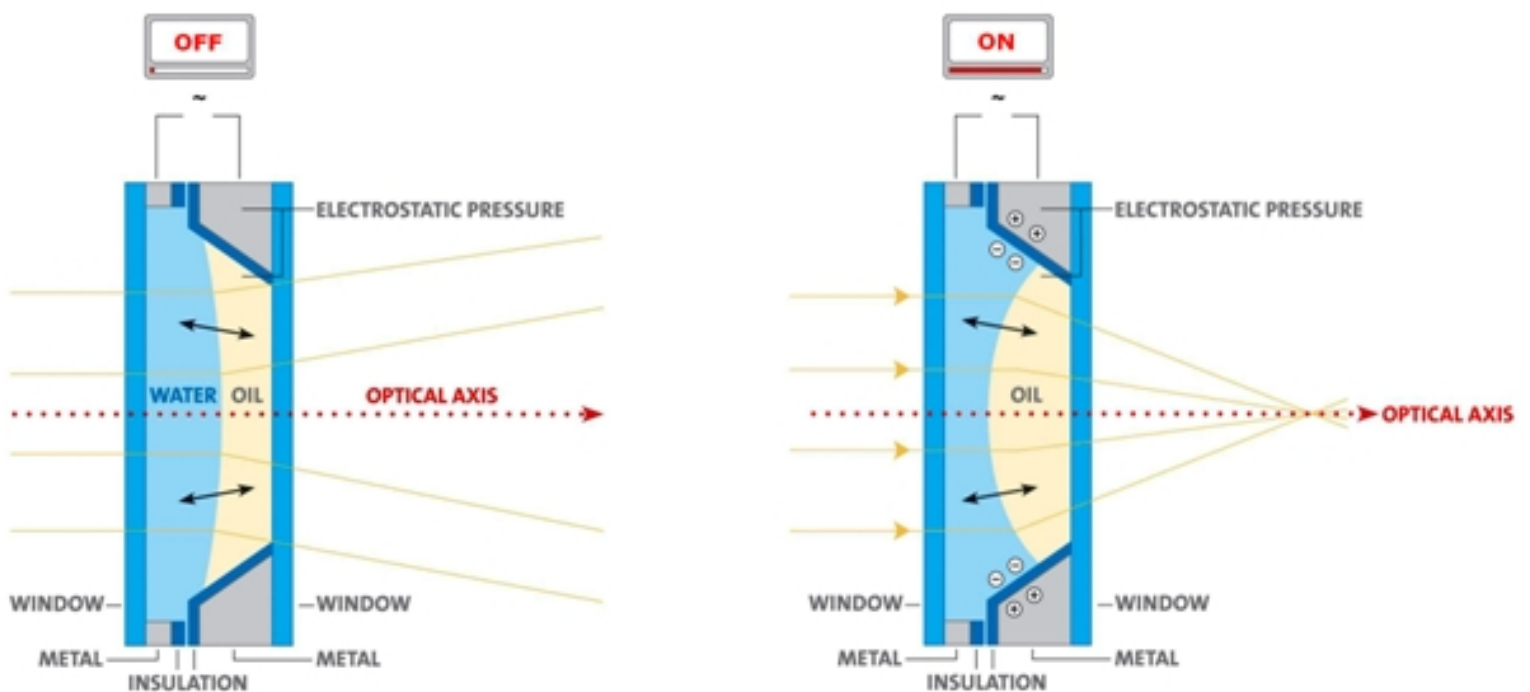
Large range of optical variation - displacing a liquid interface allows for large phase shift variations.

Sturdiness - it has been tested for over 100 million cycles and shows zero performance degradation

Shock resistance - it shows excellent output of the response curve before and after shock tests

High-speed - it can reconfigure in tens of milliseconds (see diagram below)

Low power consumption - typically it dissipates about 15mW, ten times lower than other systems



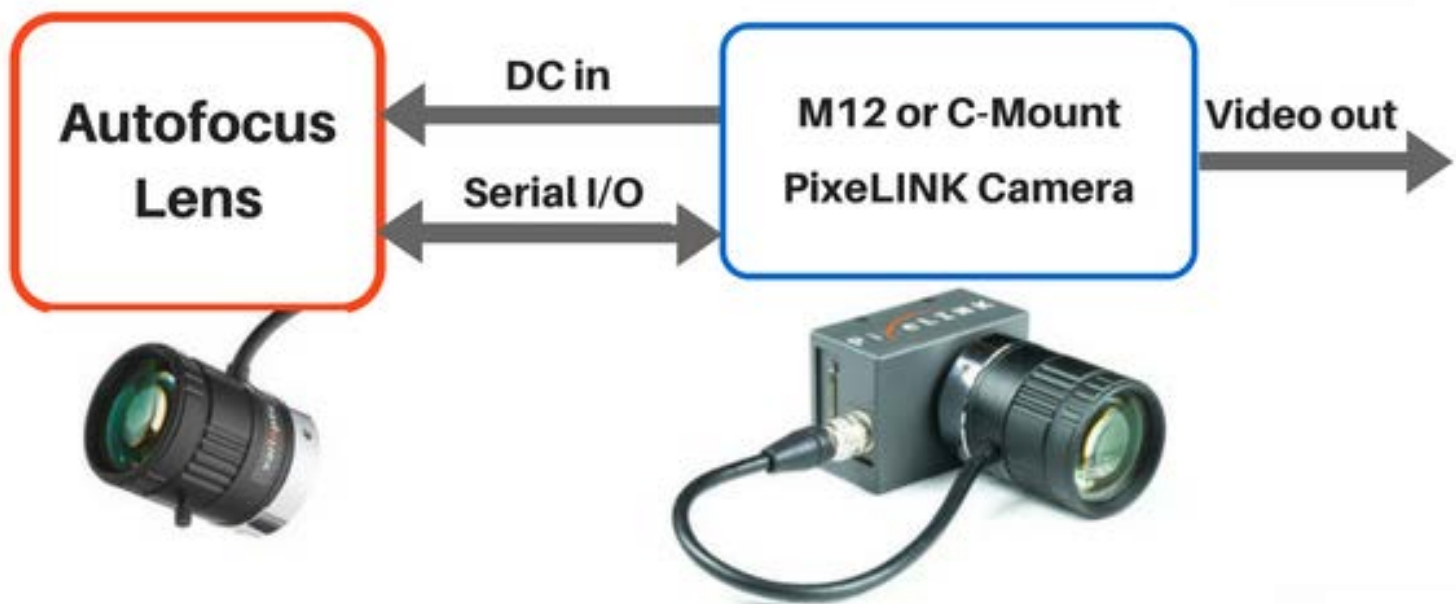
PixelINK has a full line of USB3 Auto focus cameras including:

Cameras	Color Space	Sensor	Resolution	Lens Format
PL-D721-AF	Monochrome or Color	On Semi (Vita 1300)	1.3 MP	1/2"
PL-D722-AF	Monochrome or Color	On Semi (Vita 2000)	2.3 MP	2/3"
PL-D729-AF	Monochrome	On Semi (Mano 9600)	9.5 MP	2/3"
PL-D755-AF	Monochrome or Color	Sony (IMX250)	5.0 MP	2/3"
PL-D7715-AF	Color	Aptina (MT9F002)	15 MP	1/2.2"
PL-D775-AF	Monochrome or Color	Aptina (MT9P031)	5.0 MP	1/2.5"

Lens Specifications:

Format	M12 Lens			C-Mount Lens	
Effective Focal Length	2.6 mm	7.5 mm	9.6 mm	16 mm	25 mm
F-number	2.5	2.9	3.7	2.8	4
Sensor Compatability	1/2.5"	1/2.5"	1/1.8"	2/3"	2/3"
Image Circle Diameter	7.2 mm	7.2 mm	9.1 mm	11 mm	11 mm
Focus Range	4 mm to ∞	7 mm to ∞	7 mm to ∞	11 cm to ∞	12 cm to ∞

Select the camera and the Varioptic auto-focus lens that fit your application:



For a full detailed line of PixelINK cameras or to speak with us about your unique requirements please visit us at:

WWW.PIXELINK.COM

