

AL179 Expandable Series High Power Bar Lights




Product Highlights

- 3x brighter than the LL5806/LL6212
- For use in long distance or large area inspections
- Expandable in 152mm (6") increments up to 1,219mm (48")
- Wash down option provides IP compliance

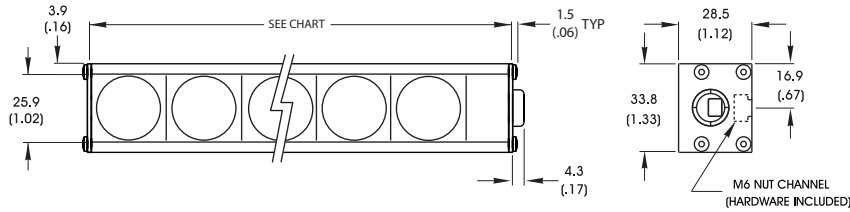


General Specifications

Electrical Specifications	Color	24v Current	All Other Controls
	WHI	0.5 A per 6 inch	0.39 A Max per 6 inch
Normal Operating Temperature	0 - 60°C		
Weight (g)	226.8g (8 oz)		
Standard Cable Information	Up to 2 meters (80") long - 105°C rated PVC jacket, foil shield with drain.		
Photobiological Risk Factor IEC 62471	Group 1 (Low-Risk) Applicable Wavelengths: WHI		
Compliance			
IP Rating	Wash Down Option - IP65 Non Wash Down - IP50		
Lumen Maintenance	L70 = 50,000 hours		

AL179 Expandable Series

Mechanical Specifications



Non Washdown

Part #	Length in mm (inches)
AL179 ¹	179.7 (6.84)
AL17912	326.1 (12.84)
AL17918	478.6 (18.84)
AL17924	630.9 (24.84)
AL17930	783.3 (30.84)
AL17936	935.7 (36.84)
AL17942	1088.1 (42.84)
AL17948	1240.5 (48.84)

Washdown Option

Part #	Length in mm (inches)
AL179 ¹	176.8 (6.96)
AL17912	329.2 (12.96)
AL17918	481.6 (18.96)
AL17924	634.1 (24.96)
AL17930	786.4 (30.96)
AL17936	938.8 (36.96)
AL17942	1091.2 (42.96)
AL17948	1243.6 (48.96)

DIMENSIONS ARE IN MILLIMETERS (INCHES)

¹AL179 does not require a two digit suffix to represent this length.

Part Number Key

Model	Illuminated Length	—	Spectral Wavelength	Connector/Control	Heat Sink Option	Wash Down Option	Optional Light Conditioning	—	Alternative Connector
AL179	XX	—	XXX	XX	X	X	X	—	XXX
AL179	(6" increments from 6" to "48)		WHI (white)	C1 C5 IC ² I3 ² I3S ²	H	W	D (diffuser)		M12 ¹
Ex: AL179-WHIC1 AL17918-WHIC1HW							¹ Available with IC, I3 and I3S options only ² Maximum length is 18"		

Stock Product: *shipped next day*
None

Build to Order: *shipped in two weeks*

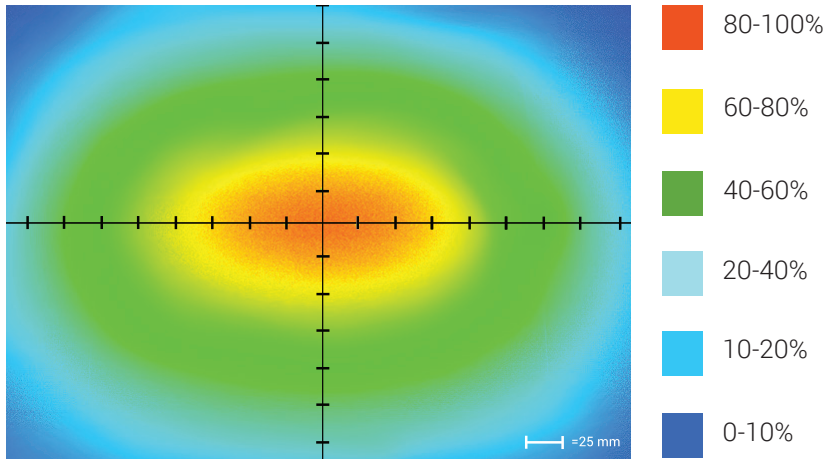
Connector | Control Options

C1 Connector	C5 Connector	IC	I3	I3S
For use with: DCS Series Controllers	For use with: Pulsar 320 Strobe Controller.	Continous in-line controller Powered with: 24V power supply	Combination strobe/continous in-line controller Powered with: 24V power supply	Default-OFF strobe/continous in-line controller Powered with: 24V power supply

AL179 Expandable Series

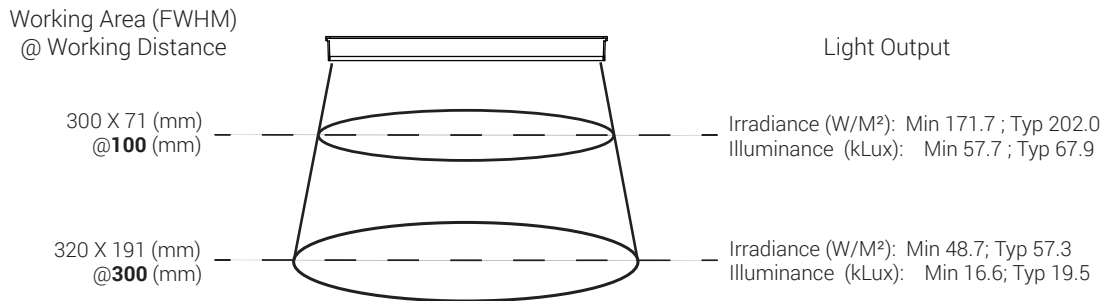
Optical Performance

Intensity Distribution



Optical measurement taken using AL179-WHIC @ 300 mm

Area of Illuminance & Intensity



Operation and Wiring

ICS 2 (IC)

Pin (M12)	Function	Wire Color
1	+24 VDC	Brown
2	GHI	White
3	GND	Blue
4	GLO	Black
5	N/A	N/A

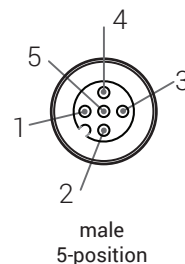
ICS 3 (I3 and I3S)

Pin (M12)	Function	Wire Color
1	+24 VDC	Brown
2	Reserved	White
3	GND	Blue
4	PNP/Active High Trigger	Black
5	0-10 VDC Analog Control	Gray

24 Volt

Pin (M12)	Function	Wire Color
1	+24 VDC	Brown
2	N/A	White
3	GND	Blue
4	N/A	Black

Optional M12 Pinout



AL179 Expandable Series

Warranty Information

Every Advanced illumination, Inc. (Ai) product is thoroughly inspected and tested before leaving the factory. Products are warranted to be free of defects in workmanship and materials for a period of two years from the original date of purchase. Should a defect develop during this period, please contact Ai Customer Service or your Ai distributor for a Return Merchandise Authorization (RMA), and return the complete product, freight prepaid, to Ai. If a defect is found, Ai will - at our discretion - repair or replace the product without charge. Ai claims no liability for any implied warranties, including "merchantability" and "fitness for a specific purpose."

Electromagnetic Compatibility

This product was tested and complies with the regulatory requirements and limits for electromagnetic compatibility (EMC) as stated in the product specifications. These requirements and limits are designed to provide reasonable protection against harmful interference only when the product is operated in its intended industrial electromagnetic environment. To minimize the potential for electromagnetic interference or unacceptable performance degradation, install and use this product in strict accordance with the instructions in the product documentation.

Customer Service

For information on existing orders, or to make an order adjustment, contact us Monday through Friday 8:00 am to 5:00 pm, EST or send an email to orders@advill.com.

Company Information

Advanced Illumination

440 State Garage Road, Rochester VT. 05767

Phone: 802.767.3830

Fax: 802.767.3831

Email: info@advancedillumination.com

Web: advancedillumination.com

© 2015 Advanced Illumination Inc. All rights reserved